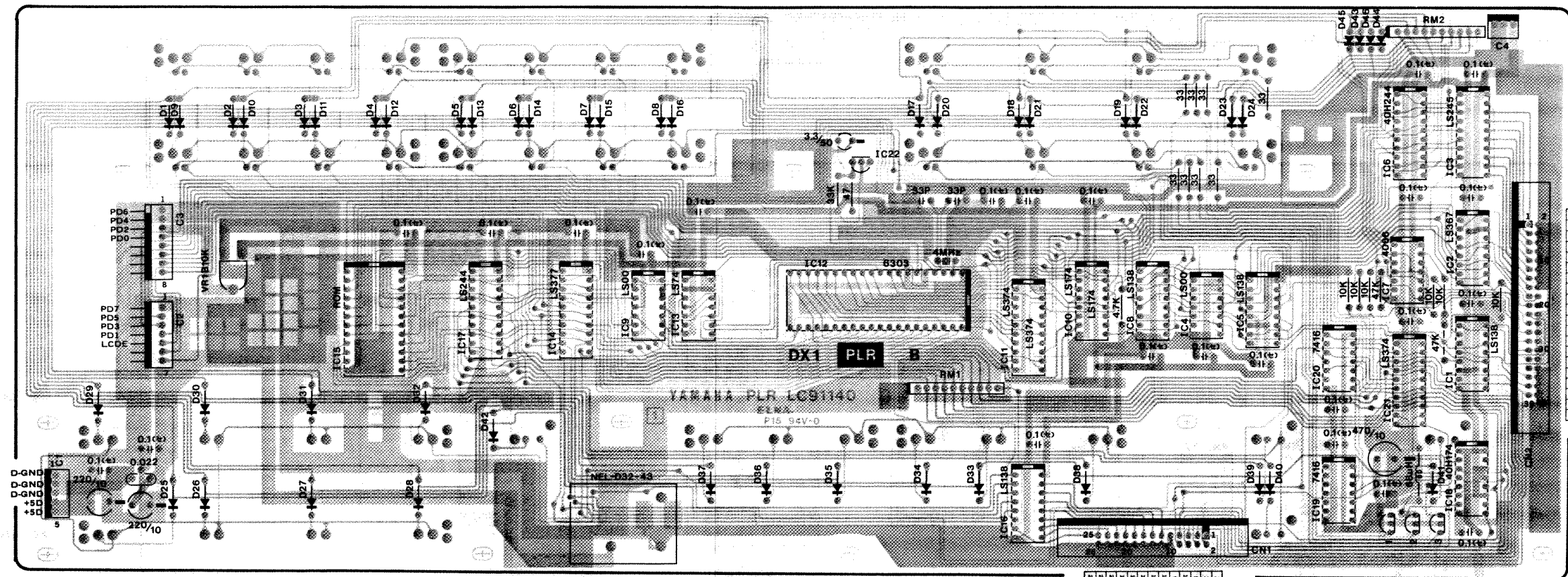


PLR CIRCUIT BOARD & WIRING



1	MD0	G	2
3	MD1	G	4
5	MD2	G	6
7	MD3	G	8
9	MD4	G	10
11	MD5	G	12
13	MD6	G	14
15	MD7	G	16
17	MA0	MA1	18
19	MA2	MA3	20
21	MA4	G	22
23	DINSA	G	24
25	DPRTA	G	26
27	DINSE	G	28
29	DPRTB	G	30
31	RES	G	32
33	—	G	34
35	IKW	G	36
37	PNLE	G	38
39	SLE	G	40

1	LDD2	LDD3	4
5	LDD4	LDD5	6
11	LDD6	LDD7	8
9	G	G	10
10	LNS	G	12
13	NOT	G	10
15	LOI	G	4
17	NO2	G	18
19	LD2	G	20
21	NO3	G	22
23	LOI	G	24
25	LD4	G	26

Pin Name	Wire Color	Destination
D-GND	GY	DCD-D-GND (C22-5)
D-GND	GY	DCD-D-GND (C22-4)
D-GND	GY	DCD-D-GND (C22-3)
+5D	OR	DCD+5D (C22-2)
+5D	OR	DCD+5D (C22-1)

Pin Name	Wire Color	Destination
+5D	OR	DTCN2+5D (C1-1)
—		
D-GND	GY	DTCN2-D-GND (C1-3)

cuit Board : LC91140

- | | |
|-------------|----------------------------|
| 5 | |
| 1, 5, 8, 16 | : 74LS138 |
| 2 | : 74LS367 |
| 3 | : 74LS245 |
| 4, 9 | : 74LS00 |
| 5 | : 40H244 |
| 7 | : 4066 |
| 10 | : 74LS174 |
| 11, 21 | : 74LS374 |
| 12 | : 6303 |
| 13 | : 74LS74 |
| 14 | : 74LS373 |
| 15 | : 2732A — 30Z
(IN00630) |
| 17 | : 74LS244 |
| 18 | : 40H174 |
| 19, 20 | : 7416 |
| 22 | : PST518 |

ansistors

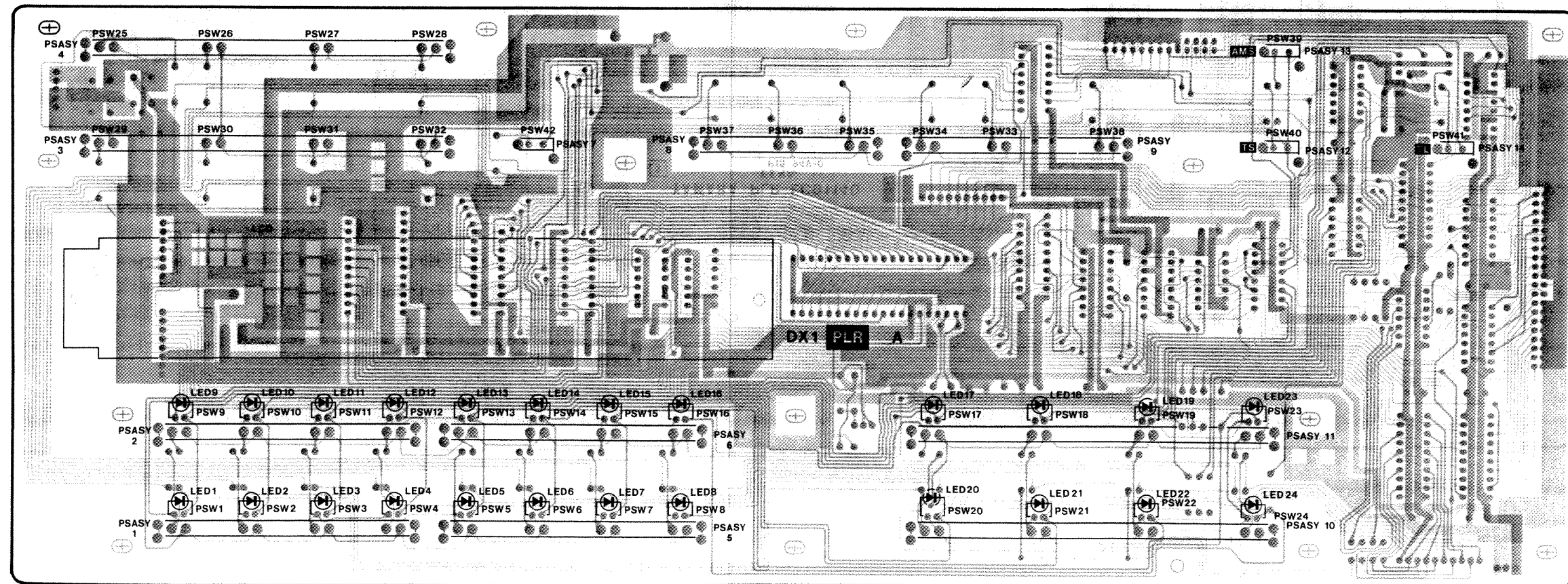
- 1 ~ 3 : 2SD1198 (R)
odes
~ 42 : 1SS133
13 ~ 46 : 0A95

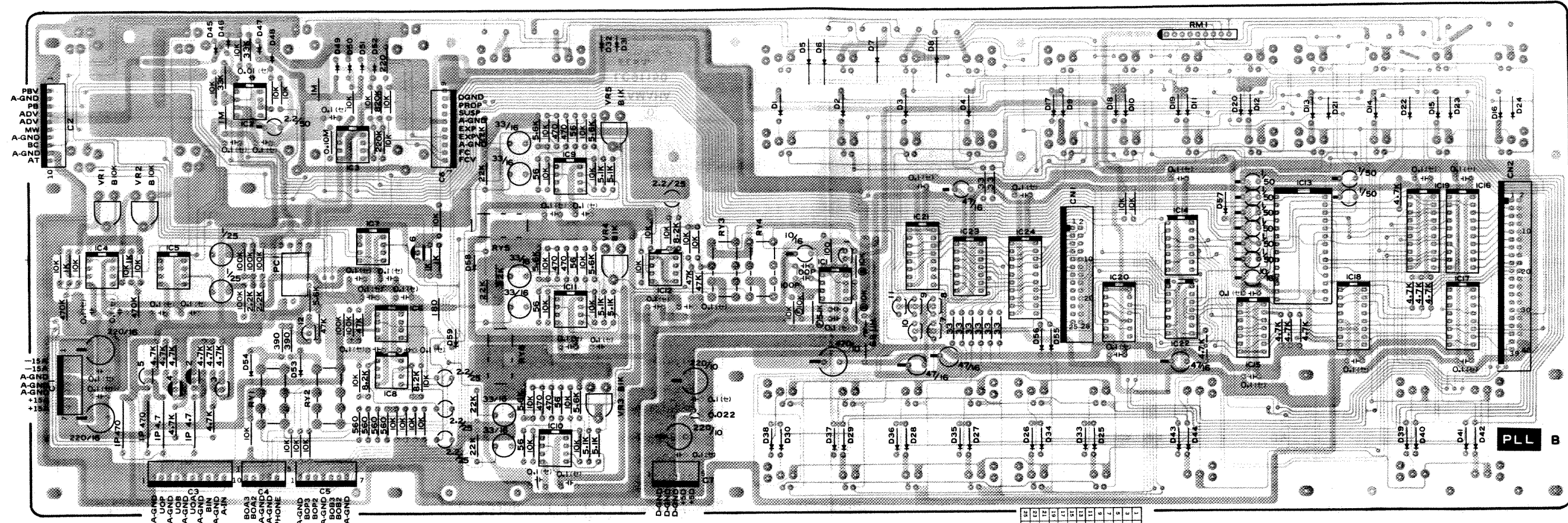
pacitor

- 2) Marked : Semi-Conductive Ceramic Cap.

Resistor Module

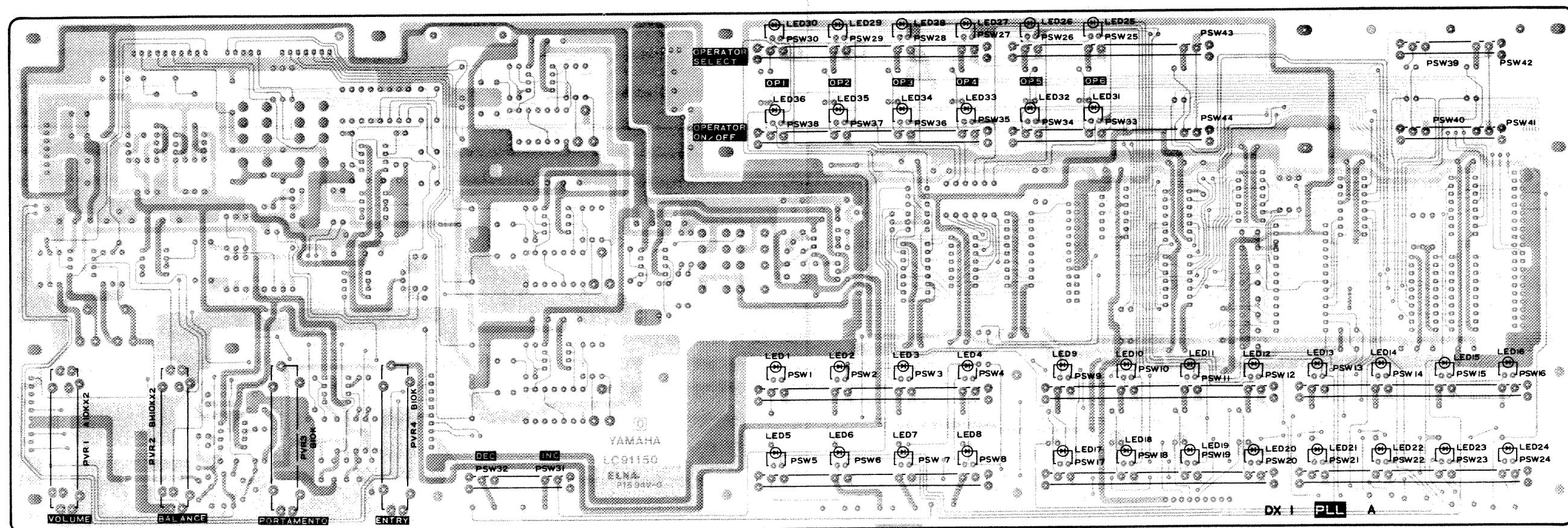
- M1, 2 : RM9-472J
Variable Resistor
R1 : B10K
: Electro Magnetic
Interference 0.022
2 : Ceralock 4MHz
3 : NEL-D32-43



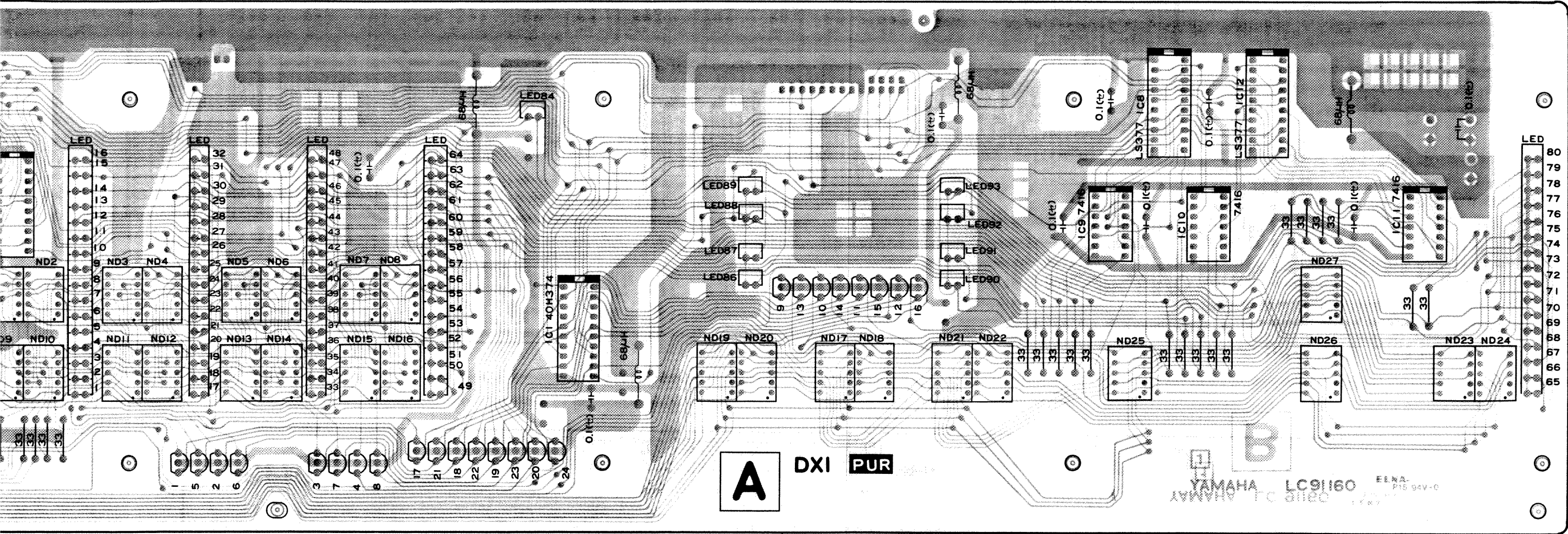


1	MD0	G	2
3	MD1	G	4
5	MD2	G	6
7	MD3	G	8
9	MD4	G	10
11	MD5	G	12
13	MD6	G	14
15	MD7	G	16
17	MA0	MA1	18
19	MA2	MA3	20
21	MA4	G	22
23	—	G	24
25	—	G	26
27	—	G	28
29	—	G	30
31	RES	—	32
33	BAT	G	34
35	MW	G	36
37	PNLE	G	38
39	SLE	G	40

25	LD4	G	G	26
23	—	G	G	24
21	—	G	G	22
19	—	G	G	20
17	—	G	G	18
15	—	G	G	16
13	—	G	G	14
11	LMS	G	G	12
9	G	G	G	10
7	LD06	LD07	G	8
6	LD04	LD05	G	5
3	LD02	LD03	G	4
1	LD00	LD01	G	2



PUR CIRCUIT BOARD & WIRING



- Note)
1. Circuit Board : LC91160
 2. IC's
IC1 : 40H374
IC2, 5, 8, 12 : 74LS377
IC3, 4, 6, 7 : 74 247
IC9 ~ 11 : 7416
 3. Transistors
Tr1 ~ 24 : 2SD1198 (R)

C1			
Pin No.	Pin Name	Wire Color	Destination
1	D-GND	GY	DCD-D-GND (C24-5)
2	D-GND	GY	DCD-D-GND (C24-4)
3	D-GND	GY	DCD-D-GND (C24-3)
4	+5D	OR	DCD+5D (C24-2)
5	+5D	OR	DCD+5D (C24-1)